

women's aid

Belfast and Lisburn

Working to End Domestic Violence

# IMPACT REPORT 2017 -2018



Behind  
Closed  
Doors  
No  
More



# Leadership Statement

Domestic violence is a global issue. By tackling it on a local level, we are paving the way for future generations to live free from abuse and without the threat of violence in our communities and in our homes. The PSNI respond to a domestic incident every 16 minutes, totalling 29,913 incidents in Northern Ireland in 2017/18. Yet, those statistics are only the tip of iceberg. We understand that domestic violence continues to be massively underreported. And behind each statistic, lies a family, a mother, a child – whose lives have been torn apart by domestic violence. Belfast and Lisburn Women's Aid seeks to challenge the attitudes and beliefs that allow it to remain such a serious problem in Northern Ireland.

Domestic violence happens behind closed doors. With our campaign message of "Behind Closed Doors No More" we hope to resonate with perpetrators that domestic violence will not be tolerated and that they will be held accountable. For women, we hope to empower them and encourage them to reach out while we support them on their journey to freedom. Prevention and early intervention work are vital components as we work to end domestic violence through education, training and awareness to tackle the root of the issue ingrained in society.

We provide a range of services for women and children including crisis accommodation and floating support. For the year 2017-18, 302 women and 205 children fled violent homes to seek shelter and support in our three refuges. Refuges save lives and are an integral part of our services providing a safe and supportive place for women and children escaping domestic violence. Last year, our Outreach support service supported 1376 women in the community and in their homes through our tailored projects including Gateway, Older Women's project, Younger Women's project and through our PSNI support workers. Our Outreach service enables us to break down barriers to support and reach out to the most vulnerable women in a safe place. 2017/18 also saw increased levels of participation in group work including our New Beginnings and Journey to freedom Programmes with 504 women actively engaging in the projects.

Our work with children is equally as important. Children not only witness domestic violence, they are victims in their own right. In addition to children in refuge, a total of 1748 children benefitted from both direct and indirect support through their mother being in the Outreach service.

Strategic partnership and collaboration with statutory and voluntary agencies are vital elements of our work. Belfast and Lisburn Women's Aid staff contribute to a number of strategic and operational partnerships including the Domestic and Sexual Violence and Abuse Partnerships in both the Belfast and South Eastern Trusts. We are actively involved in all areas of safeguarding through the Belfast and South Eastern Outcomes Groups that feed in to the Safeguarding Board NI and participate in the MARAC process for women assessed as high risk. We continued to work closely with the PSNI and Public Protection Unit in Belfast with our

two PSNI support workers solidifying this effective partnership. Over the past year, we have continued to positively engage with our sister Women's Aid groups as part of the Women's Aid 'Change Management Process'. The process has seen greater collaboration to help standardise service delivery throughout Northern Ireland.

This year saw an increase in the number of Trafficked women we supported, both women needing our accommodation and those living in the community. Each year we develop our expertise in this area allowing us to offer a high level of support to women and children experiencing this horrendous exploitation.

This year, we saw a significant development in Northern Ireland with the introduction of the Domestic Violence Disclosure Scheme (Clare's Law) which offers people the "Right to Ask" if their partner, or partner of someone they know, has a history of domestic abuse. The enactment of a Domestic Abuse Bill which encompasses a new domestic abuse offence for coercive and controlling behaviour continues to be stalled as a result of the suspension of the NI assembly. In the absence of a functioning executive, Belfast and Lisburn Women's Aid, in collaboration with WAFNI and our sister Women's Aid Groups, will continue to lobby for the Domestic Abuse Bill in Northern Ireland.

In January 2018, we held our "Transforming Lives" Conference which brought together stakeholders from across the legal, community, social care, housing and justice sectors. The conference was a great awareness raising success and an opportunity for staff and volunteers to come together and celebrate the achievements of the past year.

We would like to thank our dedicated and passionate staff and volunteers who underpin the ethos of the organisation in their daily roles and who make a difference to the lives of women and children in our services, both directly and indirectly. Our Trustee Board and Senior Management Team provide the governance, strategic, risk and financial oversight that the organisation requires and are vital attributes to the organisation. It is the individual and collective skillsets, experience and expertise within the organisation which truly makes a difference to the quality and impact of our work.

We would not be able to do our work without the investment and support from our funders. The Supporting People Programme (through the Housing Executive), the Belfast Health and Social Care Trust, the South Eastern Health and Social Care Trust, the Lisburn and Belfast PCSPs, the Department of Justice, the Department of Education Early Years, The Big Lottery, the PSNI and all who kindly donate to us.

We continue to face challenges to sustain and improve service provision in a political vacuum and uncertain funding climate. With women and children as our catalysts and in collaboration with our sister Women's Aid Groups and stakeholders, we are committed and motivated to continue to lead the way in the field of domestic violence as experts, advocates and social guardians - inspired by the women and children we work with

*Aideen O'Neill*  
**Chair**

*Kelly Andrews*  
**Chief Executive**



302

women housed in refuge

798 women were supported by the Floating Support Team



205 women engaged in our Gateway Early Intervention service



504 women were supported in group work programmes including Journey to Freedom and New Beginnings



205

children housed in refuge

253 women were supported by the PSNI Support Workers



120 women were supported by the Older Women's Project



218 women accessed information in our One Stop Shop in Belfast including access to legal, benefits and housing advice

Our work with children in refuge included...



574 one-to-one sessions



1716 play sessions



223 trips, outings and events

292 personal development sessions



We worked directly with 537 children & young people in the community/resource centre, providing

875 one-to-one support sessions



179 children benefited from group work programmes in refuges and in the resource centre



"Since coming to the group I have become more aware of self esteem and it builds it up...The group helped me to be brave"  
Quote from a child

# Statement of Accounts

Income From:	£	%
Supporting People - Refuge	863,063	42%
Supporting People - Floating Support	468,985	23%
Housing Management	207,107	10%
Health & Social Care Trusts	203,178	10%
Grants	175,866	9%
Donations	50,956	2%
Investment Income	49,354	2%
Utilities Income	23,912	1%
Training	6,006	<1%
	<b>2,048,427</b>	

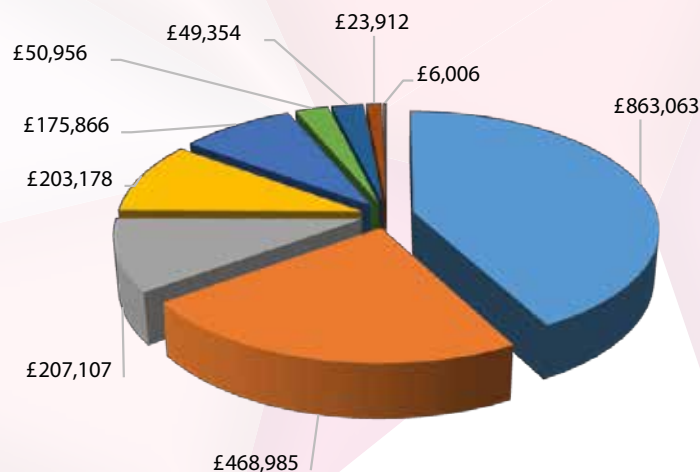
Resources Expended	£	%
Supported Housing	1,099,427	50%
Outreach Support	1,002,731	46%
Other	69,951	3%
Voluntary Income/Raising Funds	15,046	1%
	<b>2,187,155</b>	

## Summary Balance Sheet

At 31 March 2018 Women's Aid held the following assets:	£
Fixed Assets	3,858,212
Net Current Asset after pension liability	937,865
	<b>4,796,077</b>

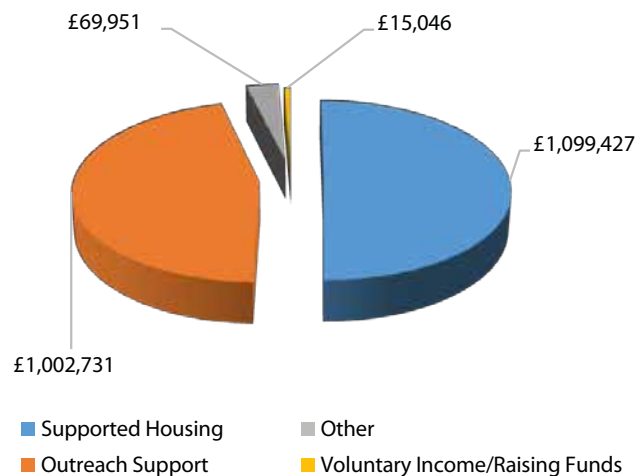
And the following funds:	£
Unrestricted	1,350,108
Designated	1,878,660
Restricted	1,567,309
	<b>4,796,077</b>

## Incoming Resources 2017/18



- Supporting People - Refuge
- Supporting People - Floating Support
- Housing Management
- Health & Social Care Trusts
- Grants
- Donations
- Investment Income
- Utilities Income
- Training

## Resources Expended 2017/18



- Supported Housing
- Outreach Support
- Other
- Voluntary Income/Raising Funds

## Our Vision

To eliminate domestic and sexual violence against women and children.

## Our Mission Statement

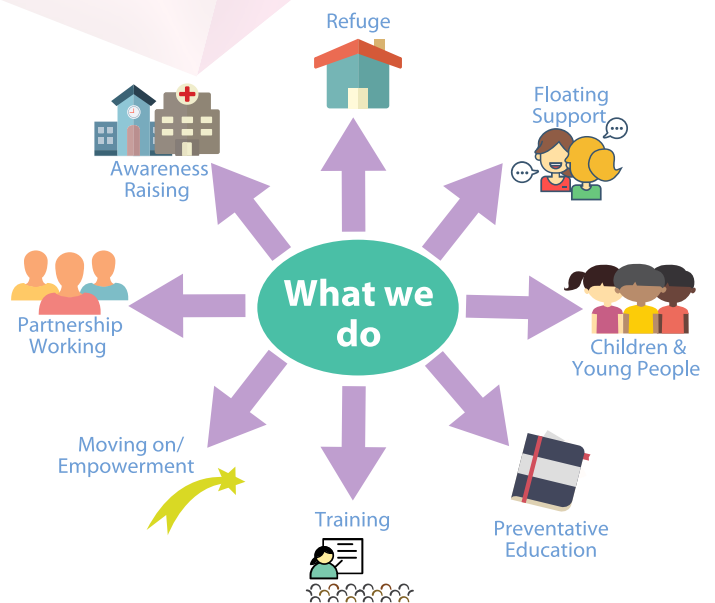
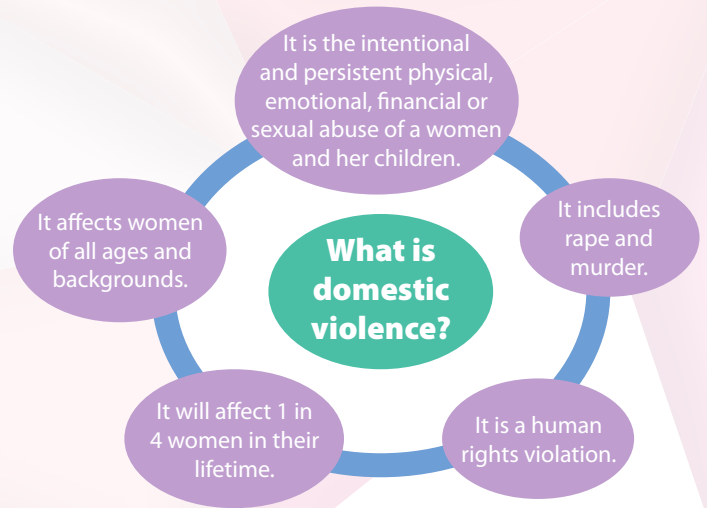
- To provide specialised support services for women and children who experience domestic and sexual violence.
- To work for and with women and children to ensure their voices are heard and their needs are met.
- To challenge attitudes and beliefs that perpetuate domestic and sexual violence as a form of violence against women.

## Our Ethos

Self-help and mutual support for women, by women, with women.

## Our Core Aims

- To provide temporary refuge for women and their children suffering mental, physical, financial or sexual abuse in the home.
- To offer support and advice to any woman who asks for it, whether or not she is living in a refuge and offer supportive aftercare to women leaving the refuge.
- To encourage the woman to take control of her own future, whether this involves returning home or beginning an independent life.
- To meet the needs of children and young people affected by domestic violence.
- To educate and inform the public, the media, the courts and statutory and voluntary agencies, always mindful of the fact that abused women are a direct result of the general position of women in our society.



In 17/18 the PSNI responded to 29,913 incidents

14,560 of those incidents crimes had been committed

This represents the highest level recorded since PSNI data records started in 2004/5



## With thanks to our funders

With thanks to our funders, partner agencies and to all the dedicated individuals, organisations and companies who supported our work against domestic violence so generously during the year.

- ASDA Dundonald
- Belfast City Council Belfast District PCSP
- Belfast City Council Women's Network
- Belfast City Hospital Transport Dept.
- Belfast Health & Social Care Trust
- Belfast Health & Social Care Trust – Human Resources/Equalities Team
- Big Lottery Fund
- Boys Model School
- Capita/Prudential
- Cash for Kids – Mission Christmas
- Celtic Football Club
- Christian Fellowship Church - Newtownards & Strandtown
- Compassion Belfast (UT Church)
- Cooke Centenary Church
- Council for the Homeless NI (CHNI)
- Department of Education – Pathways Fund
- Department of Justice
- Lisburn & Castlereagh PCSP
- Lisburn Zone Indoor bowls
- NIHE – Housing Management
- NIHE – Supporting People
- M&S Ballyhackamore Belfast
- Parkview Special School Lisburn
- Red Cross via WAFNI
- South Eastern Health & Social Care Trust
- St John's Church Malone
- Tesco Extra Newtownbreda
- Unison
- Wallace High School, Lisburn
- Whitemountain Quarries Ltd

## General Information

### Directors

Aideen O'Neill  
Alice Bradley  
Claire Woolsey  
Erin Tunney  
Pamela Montgomery  
Traci Kimber  
Patricia Mathison  
Philomena Duvant  
Gail Ferguson

### Secretary

Sonya Carter (up to 4th March 2018, Gail Ferguson from 5th March 2018)

### Registered Office

30 Adelaide Park,  
Belfast. BT9 6FY

### Company Registration

Number  
NI 020807

☎ 02890 666049

✉ admin@belfastwomensaid.org.uk

💻 www.belfastwomensaid.org.uk

📘 Belfast & Lisburn Women's Aid

🐦 @WomensaidBel\_Lis

Donate to Belfast & Lisburn Women's Aid

[www.belfastwomensaid.org.uk/support-us/donate-now](http://www.belfastwomensaid.org.uk/support-us/donate-now)

### Date of Incorporation

11 August 1987

### Charity Number

NIC106099

### Auditors

Jackson Andrews

### Bankers

Ulster Bank

### Solicitors

Flynn & McGettrick



"Women's Aid helped me 'face up' for the first time in my life that I was a victim of abuse. That abuse being more emotional and verbal and damaging in the extreme. Women's Aid made me a survivor and gave me a belief in myself that I never thought possible." *Quote from a woman*